



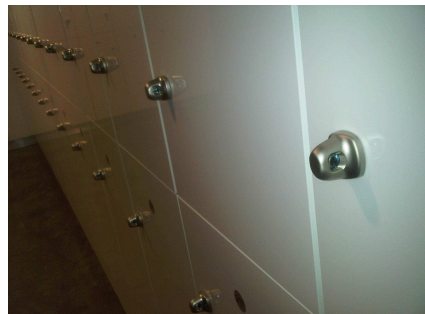
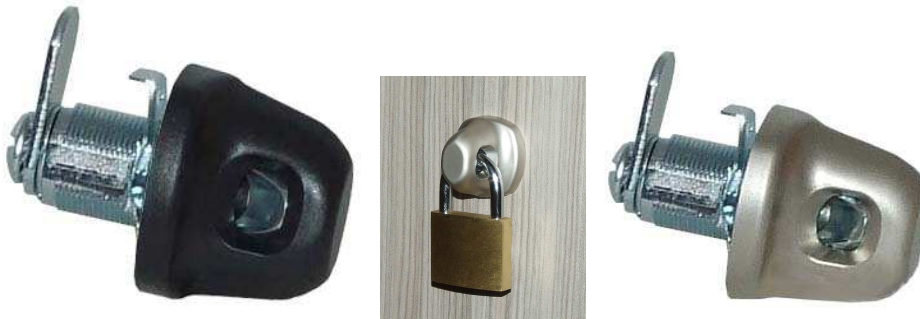
PRODUCT RELEASE - C

Issue: 061
Date: 30th June 2011

Catalogue Section: BMB - Locks
Product Manager:

Subject: BMB – Rotor Hasp Lock

BMB



Artia has received its first shipment of Rotor Hasp Locks from BMB.

The design theory behind the Rotor Hasp Lock is similar to that of a regular cam lock. The Rotor Hasp Lock consists of a metal plate; which is called the cam; the cam is attached to the lock core which rotates as knob is turned. The cam rotates between 90 to 180 degrees allowing it to lock and unlock.

The Rotor Hasp Lock is ideal for a multitude of applications including specialised lockers, shop fit outs and commercial furniture.

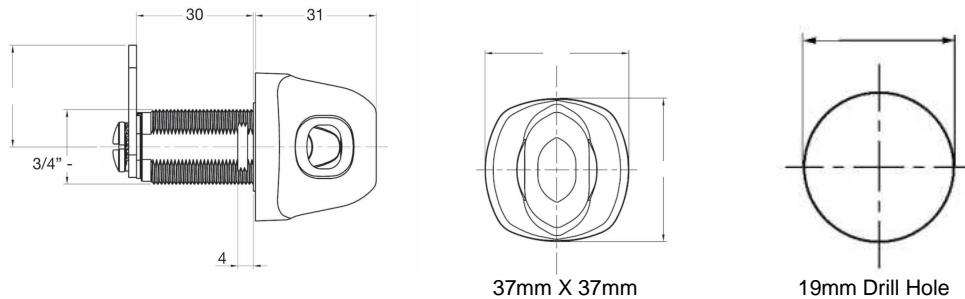
Technical Information:

Available in Two Finishes:

- Matt Black – product code 326100
- Matt Silver – product code 326101

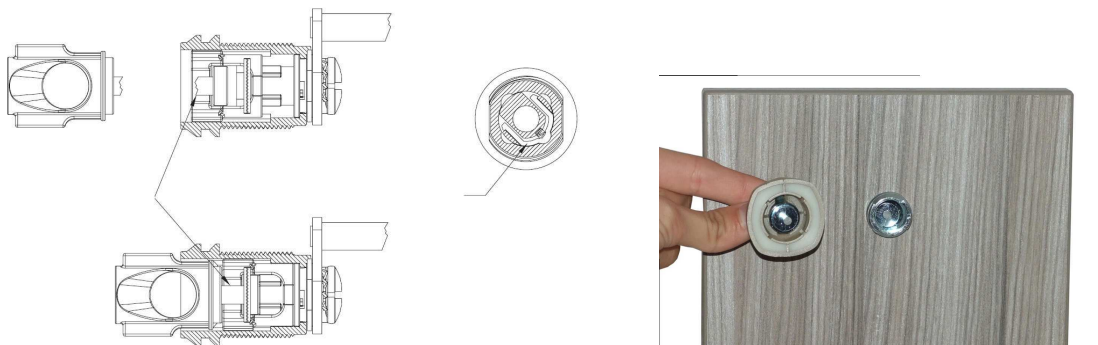
Features:

- Easy to install
- All components in a single pack
- Shackle diameter: 4 to 8mm
- Zinc Alloy Housing
- ABS Turn Knob
- Interchangeable Right Hand Left Hand
- Cam Rotation 90° to 180°
- Suitable for padlock bolts upto 8mm in diameter



Anti-theft Security Feature:

The Rotor Hasp Lock has been designed so that in the event of somebody attempting to force entry without removal of the padlock the rotary knob will break free from the inner lock mechanism resulting in the latch not being able to rotate and the Locker remaining secure.



In the case where forced entry has been attempted with a Rotor Hasp Lock the door can be opened by drilling straight through the front of the internal lock mechanism with a 10mm steel drill bit; this will release the latch and allow the door to then be opened.

Contents:

Available in Two Finishes:

- Matt Black – product code 326100
- Matt Silver – product code 326101

	1 X Rotor Hasp Lock
	2 X Stopper 90deg and 180deg RH / LH
	1 X Lever, straight, 35mm
	1 X Fixing screw with washer for cam
	1 X Hexagon nut
	1 X Anti twist washer