



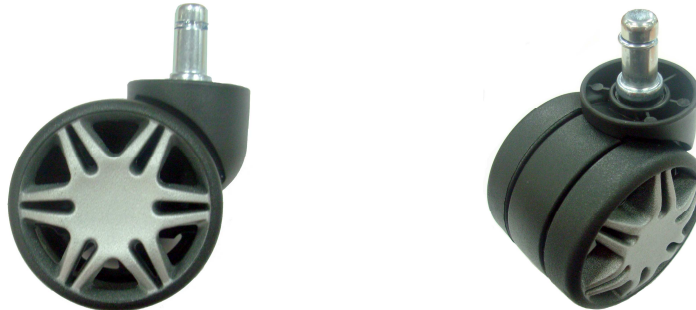
PRODUCT RELEASE - C

Issue: 012
Date: 6th March 2010

Catalogue Section: Chair Castors
Product Manager: Steve Perry

Subject: Spoke Wheel Castors

This release is to advise that the new spoke wheel castors are now in stock and available for immediate delivery.



Lynx

The “Lynx” series castors are a nylon bodied unhooded twin wheel castor with spoke wheels. The diameter of the wheel is 61mm which offers better rolling performances especially over carpeted floors. The finish of the castor body is a lightly textured black, while the wheels also having a light texture is either in black or silver spokes. This model also has a 38mm diameter neck or cylinder to match into the wider chair base leg profiles like the Taurus or Aries and all the aluminium bases with the exception of the Spire and Peak styles.

The “Lynx” castors have the ANSI/BIFMA accreditation and a static load test rating of 60Kg and are fitted with the standard C11 fixing.

Product Details

Product Code	Finish	Pack Size
802.60061.000	Silver Spoke	100
802.60061.572	Black Spoke	100



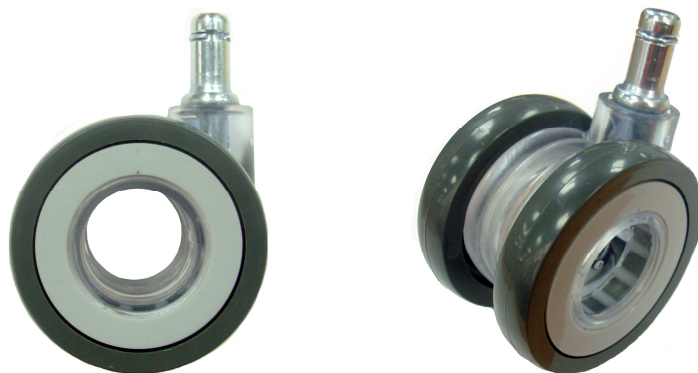
Hydra

The “Hydra” series of castors is similar to the “Lynx” model having a nylon body and spoke wheels but with different styling. The body unlike the full body of a standard castor the “Hydra” is concaved, giving a more distinctive wheel profile. Fitted with a wheel size of 64mm in diameter it offers far better rolling performance over carpeted floors. A light textured finish is on the black body along with the wheels which are either in black or silver finish. The neck of the castor suits the narrow leg profile bases like our current Peak base in nylon or aluminium and our aluminium Spire base along with the Spider steel base.

The “Hydra” castors have the ANSI/BIFMA accreditation and a static load test rating of 60Kg. it is also fitted with the standard C11 Fixing.

Product Details

Product Code	Finish	Pack Size
800.65061.000	Silver Spoke	100
800.65061.572	Black Spoke	100



Pegasus

The “Pegasus” series castor is something very different compared to the standard castor as there is no centre axle. The wheels are driven by small steel rollers in the hub of the castor body, effectively giving the same operation as a ball bearing. The main benefit of this design is smooth wheel rotation, while also offering a styling not seen on normal chair castors. The body is made of nylon but has a clear finish while the wheels being 65mm in diameter are in a grey finish. The “Pegasus” is also matching our slim leg bases such as the Peak and Spire

The "Pegasus" castor has the ANSI/BIFMA accreditation and a static load rating of 60Kg. as well as having the standard C11 fixing.

Product Details

Product Code	Finish	Pack Size
800.65071.645	Clear with Hollow	80

For further information please contact one of our customer service teams on the toll free numbers below.



AUSTRALIA

Tel 1800 008 591

Fax 1800 008 592

www.artia.com.au

Victoria
New South Wales
Queensland
Western Australia
South Australia
Tasmania

NEW ZEALAND

Tel 0800 267 625

Fax 0800 100 224

www.artia.co.nz

Auckland
Christchurch