

# GAS ACTIONS





## GAS LIFT ASSEMBLY



**SHS SAMHONGSA**

### PNEUMATIC

#### 17mm Extension

- .358 - black
- .340 - chrome

CODES	Stroke	Extension	Pack Size
655.40117.340	80	17	10
655.40117.358	80	17	10
655.40217.340	100	17	10
655.40217.358	100	17	10
655.40417.340	140	17	10
655.40417.358	140	17	10
655.40717.340	200	17	10
655.40717.358	200	17	10
655.40817.340	265	17	10
655.40817.358	265	17	10



## GAS LIFT ASSEMBLY



**SHS SAMHONGSA**

### PNEUMATIC

#### 25mm Extension

- .358 - black
- .340 - chrome

CODES	Stroke	Extension	Pack Size
655.40125.340 *	80	25	10
655.40125.358 *	80	25	10
655.40225.340 *	100	25	10
655.40225.358 *	100	25	10
655.40425.340 *	140	25	10
655.40425.358 *	140	25	10
655.40725.340 *	200	25	10
655.40725.358 *	200	25	10
655.40825.340 *	265	25	10
655.40825.358 *	265	25	10

\* indent item only

## GAS LIFT ASSEMBLY

### PNEUMATIC

#### 0mm Extension

- .358 - black
- .340 - chrome

CODES	Stroke	Extension	Pack Size
655.40400.358 *	140	0	10
655.40400.340 *	140	0	10

\* indent item only



**SHS SAMHONGSA**

## GAS LIFT ASSEMBLY

### PNEUMATIC

#### 43mm Extension

- .358 - black
- .340 - chrome

CODES	Stroke	Extension	Pack Size
655.40243.358	100	43	10
655.40443.358 *	140	43	10

\* indent item only



**SHS SAMHONGSA**

## GAS LIFT ASSEMBLY

### PNEUMATIC

#### 43mm Extension

- cable activation
- .368 - silver

CODE	Stroke	Extension	Pack Size
655.60443.368 *	140	43	10

\* indent item only



**SHS SAMHONGSA**



## GAS LIFT ASSEMBLY



**SHS SAMHONGSA**

### PNEUMATIC

#### 85mm Extension

- 100mm and 140mm stroke
- .358 - black

CODES	Stroke	Extension	Pack Size
655.40285.358 *	100	85	10
655.40485.358 *	140	85	-

\* indent item only



## GAS LIFT ASSEMBLY



**SHS SAMHONGSA**

### PNEUMATIC

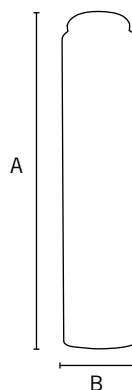
#### Heavy Duty

- 150kg rating
- 2 stage heavy duty
- .358 - black

CODES	Stroke	Extension	Pack Size
654.14217.358	100	17	10
654.14417.358	140	17	10



## HEIGHT ADJUSTMENT



### MANUAL

#### Column

- 50.8mm taper
- c/w nylon hub
- BL - black
- CH - chrome

CODES	A	B	Pack Size
150-3X8BL	205	50	12
150-3X8CH *	205	50	12

\* indent item only

**CORNALL**

**artia**  
Specialists In Cabinet and  
Furniture Hardware

## HEIGHT ADJUSTMENT

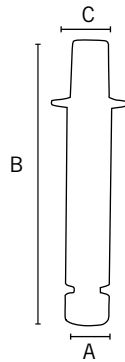


### MANUAL

#### Swivel Spindle

- with 17-26 top taper
- fixed height chairs
- raw finish

CODE	A	B	C	Pack Size
<b>140-14RAW</b>	25.4	128	17.26	10



**CORNALL**

## HEIGHT ADJUSTMENT

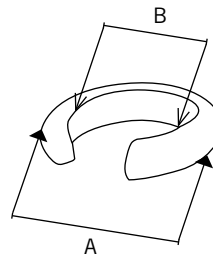


### MANUAL

#### Grip Ring

- suits 140-14 spindle
- black finish

CODE	A	B	Pack Size
<b>140-15</b>	30	20	10



**CORNALL**

## HEIGHT ADJUSTMENT

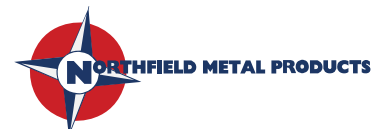
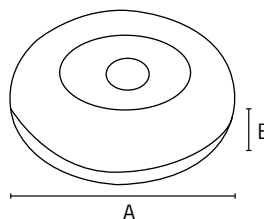


### MANUAL

#### 4" Handbell

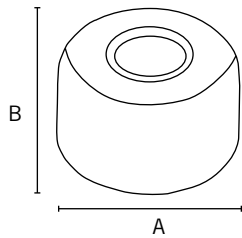
- suits NH530 hub assembly (refer to page 92)
- for manual height adjustment
- black finish

CODE	A	B	Pack Size
<b>B4BL</b>	110	35	50





## HEIGHT ADJUSTMENT



### MANUAL

#### 2 1/4" Handbell

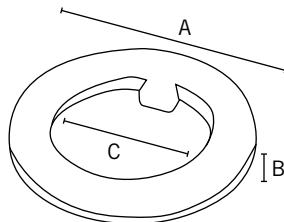
- suits SKW-73/4 spindle
- for manual height adjustment
- black finish

CODE	A	B	Pack Size
DB21/4BL *	57	32	100

\* indent item only



## HEIGHT ADJUSTMENT



### MANUAL

#### Thrust Washer

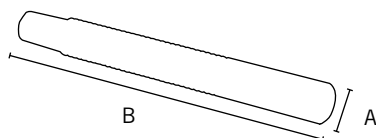
- suits SKW-73/4 spindle
- natural finish

CODE	A	B	C	Pack Size
H785-4	40	3	25.4	1000

**CORNALL**



## HEIGHT ADJUSTMENT



### MANUAL

#### Threaded Spindle

- with 17-26 top taper
- raw finish

CODE	A	B	Pack Size
SKW-73/4	25.4	215	10

**CORNALL**