

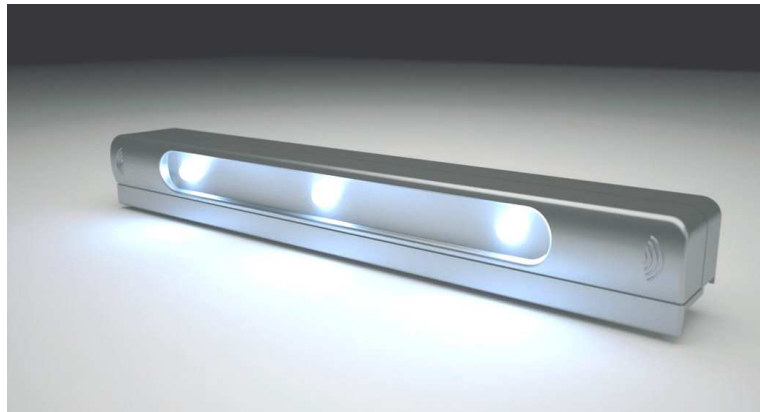


PRODUCT RELEASE – C

Issue: 019
Date: 7th April 2010

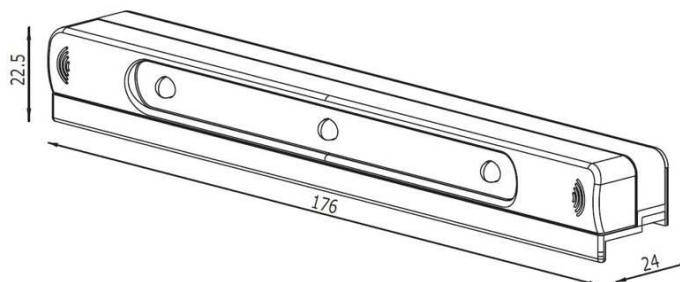
Catalogue Section: Lighting
Product Manager: Keiran Lowden

Subject: New FGV Faro Light



We are pleased to announce the release of a new innovative product from FGV Italy – Faro. Faro is a battery operated LED lighting system featuring a single motion activated sensor which activates the light through movement. Faro has been designed with the purpose of illuminating drawers as they are opened but has many other potential uses. Once activated, the bright LED's will remain on for a period of approximately 15 - 20 seconds after which time they will switch off if no further movement is detected.

Technical Information



Dimensions of the Faro are 176mm L x 24mm W x 22.5mm H. It features 3 x bright LED lights spaced and oriented for maximum illumination. Faro is battery operated requiring 3 x AAA batteries (not included) and once illuminated the

LED will remain on for a period of 15 – 20 seconds. Faro is available in white (590FR0F10000020) or nickel (590FR0S60000020) finishes.

Assembly

Assembly of the Faro is quick and easy. Mounting can be achieved utilising the self adhesive strips on the underside of the mounting plate (suitable for metal or timber). Alternatively the base plate can be screwed down using the 4 countersunk screw holes on the base plate (timber only).

To disassemble, simply slide the body of the Faro left away from the base plate exposing the battery recess.



For further information please contact one of our customer service teams on 1800 008 591 in Australia, or in New Zealand on 0800 267 625.